



Configuring 'Incident Commander' for Network Use

The following document details a set of steps to configure **Incident Commander** for network use. These steps are created on the premise that standard Windows XP configurations are used. It assumes the availability of a suitable network, such as a network switch and associated cabling. If computers are connected to the Internet, or exposed to security concerns, please ensure that appropriate actions are taken to protect them. Please see the following url for more information on network configurations.

http://sarotechnology.ca/sarotechnology/ST_Network_Selection.htm

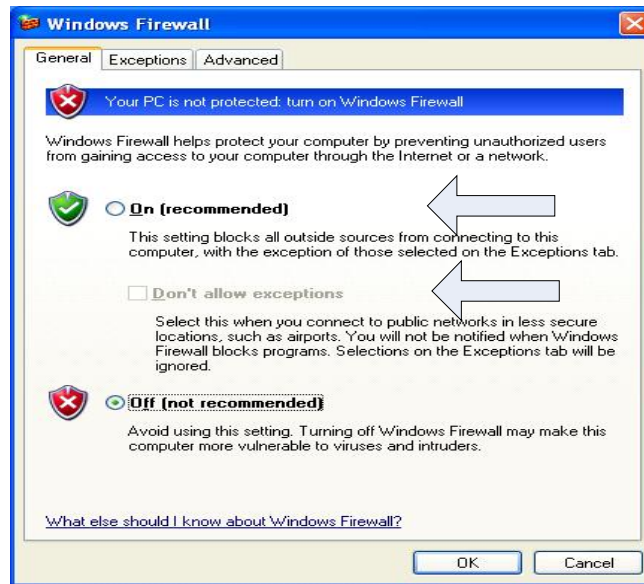
- 1) Install **Incident Commander** and then it's network license(s) onto the host computer that is to "share" its information with the networked client computers.
- 2) Run the client setup installer **IC_ClientSetup.exe** on each client computer to be networked to the host. This will install all of the necessary system files onto each client computer.
- 3) The following steps are guidelines for sharing the host computer's files with the client computers so that they may run **Incident Commander** over the network.

a) Click the start button on the taskbar and select Control Panel

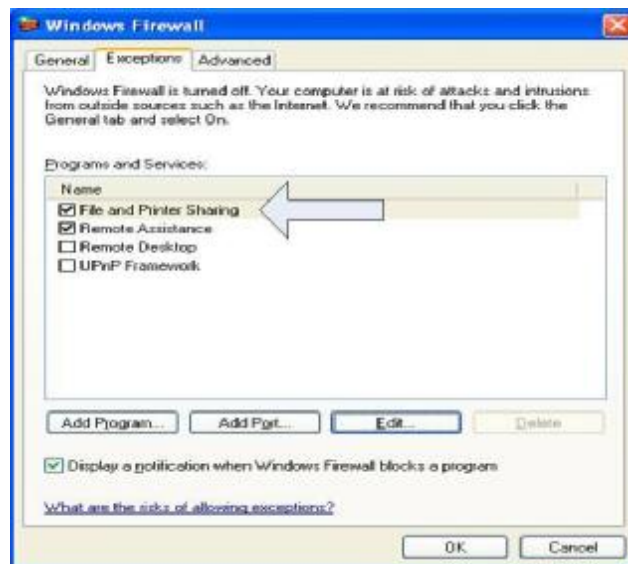
b) Double click "Windows Firewall" - assumes the installation of Service Pack 2. If other firewalls are installed on the host, corresponding configurations will have to be changed.



c) If the firewall is on, make sure the “Don’t allow exceptions” checkbox is cleared. If the firewall is off, skip the next step



d) Click on the exceptions tab and verify that file and printer sharing is checked. Close all windows



Note: Re-instate all security settings, before connecting the host computer to a public network.

e) Using “My Computer” from the start menu, double click “Local Disk (C:)”

You may be prompted with the following screen. Click “Show the contents of this folder” to view files



e) Double click the “Program Files” folder. You again may be prompted to show the contents. Double click “SAR Technology” folder. Select the IC folder and right click. Select “Sharing and Security” menu option. Depending on your configuration you may not see the two following dialog boxes. Click on the link to share files without running the wizard and then make sure the “Just enable file sharing” button is selected. Click OK.

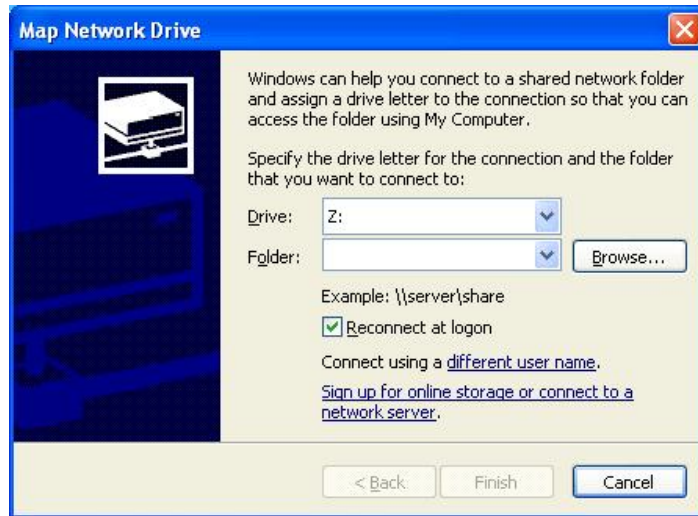




f) Click the “Share this folder on the network” check box and the “Allow network users to change my files” check box. Note: Firewall settings can also be verified from this window. Click Ok when shared. The icon for the IC folder will now have a hand under it. The host computer will now be sharing files on the network.



4) To configure each client attaching to the host, open “My Computer” from the start menu and select “Map Network Drive” from the tools menu.



Click the browse button and select the shared “IC” folder. The host’s computer name will be listed along with the IC folder



Click OK

5) The last step is to create a shortcut on the client computer to launch the application from the host computer. Right click the desktop, select “new” and “shortcut”. Browse to “My Computer”, double click the mapped drive letter that corresponds to the host and select the “SARv4” application. Click OK, Next, and Finish until the shortcut is created.

Prepared by: Glen Kulak